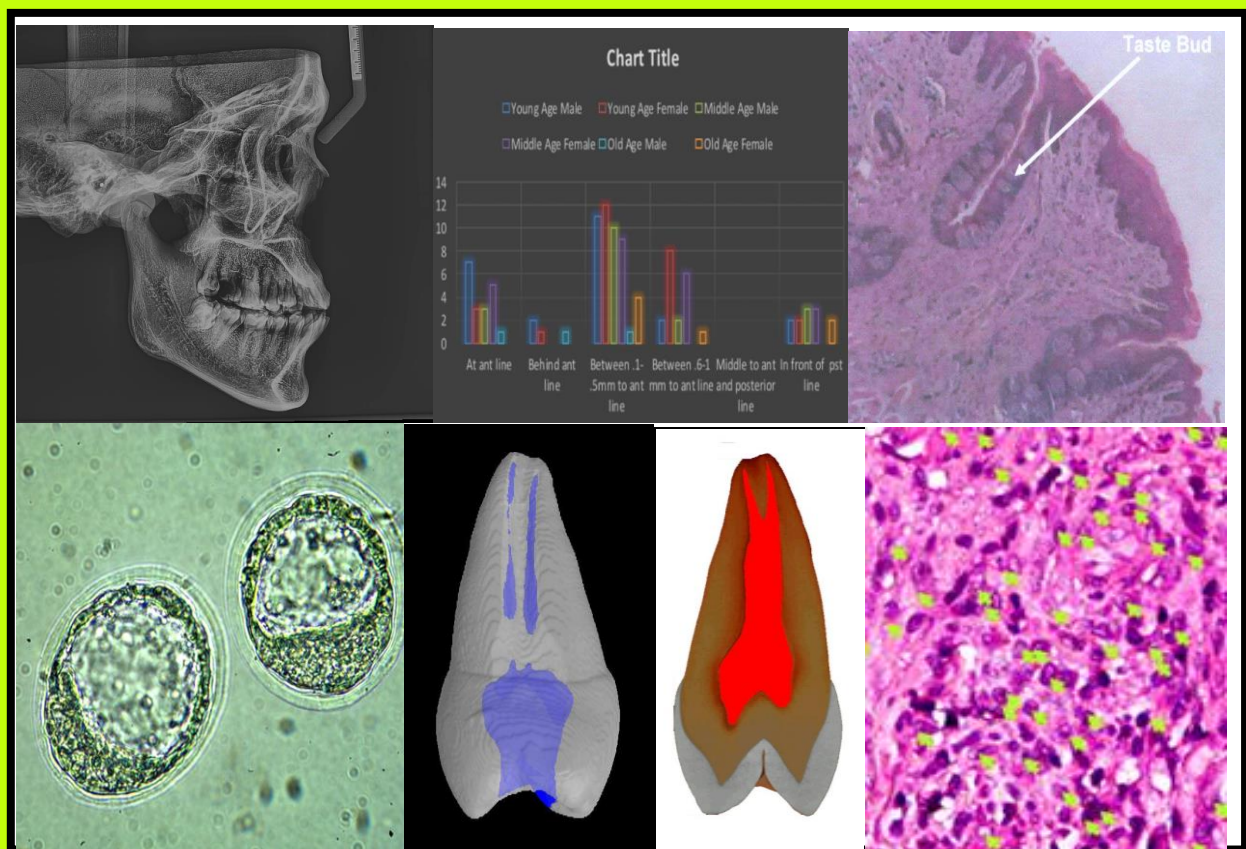


# Journal of International Dental and Medical Research



2017 - Vol. 10 –No. 3

<http://www.jidmr.com>

**TABLE OF CONTENTS / 2017; 10 (3)**
**DENTISTRY**

- |  |                         |
|--|-------------------------|
| <p><b>1. Modification of Dental Age Estimation Technique among Children from Transcarpathian Region</b><br/>         Myroslav Goncharuk-Khomyn<br/> <i>Pages 851-855</i></p>   | <b>CLINICAL ARTICLE</b> |
| <p><b>2. Oral Health Status, Malocclusions and S. Mutans Counts in Children with Down's Syndrome</b><br/>         Agim Begzati, Kastriot Meqa, Blerta Xhemali-Latifi, Teuta Kutllovci, Merita Berisha<br/> <i>Pages 856-861</i></p>  | <b>CLINICAL ARTICLE</b> |
| <p><b>3. Prevalence and Evaluation of Bone Loss Pattern among Patient with Aggressive Periodontitis</b><br/>         Mohd Faizal Hafez bin Hidayat, Fouad Hussain AL-Bayaty, Ihsan Bin Maidin, Mohammad Azrin Bin Abd Samad<br/> <i>Pages 862-867</i></p>  | <b>CLINICAL ARTICLE</b> |
| <p><b>4. Prevalence of Oral Mucosal Lesions in Geriatric Patients Living in Lower Northern Thailand: A 10 Years Retrospective Study</b><br/>         Chaidan Intapa, Chalutip Chompunud Na Ayudhya, Anawat Puangsombat, Bundit Boonmoon, Thida Janyasurin, Ubonwan Tonum<br/> <i>Pages 868-871</i></p> | <b>CLINICAL ARTICLE</b> |
| <p><b>5. Awareness and Demand of Prosthodontic Treatment for Tooth Loss Replacement</b><br/>         Saraventi Mursid, Candrika Kusuma Pujnadati, Lindawati S. Kusdhany<br/> <i>Pages 872-876</i></p>  | <b>CLINICAL ARTICLE</b> |
| <p><b>6. Association between Tooth Loss and Oral Awareness Amongst Dentate and Partially Dentate Subjects of Pakistani population</b><br/>         Huma Sajid, Yousaf Athar, Aamina Sagheer, Nazia Yazdanie, Anam Arshad, Fazal Shahid<br/> <i>Pages 877-882</i></p>                                   | <b>CLINICAL ARTICLE</b> |
| <p><b>7. Assessment of location of fovea palatine in relation to vibrating line in South Indian population</b><br/>         Aslin Sanofer A, Revathy Gounder<br/> <i>Pages 883-886</i></p>   | <b>CLINICAL ARTICLE</b> |
| <p><b>8. sCD14 Protein Analysis in Children with Very High and Low pufa Index</b><br/>         Dudi Aripin, Inne Suhera Sasmita, Anne Agustina Suwargiani<br/> <i>Pages 887-890</i></p>  | <b>CLINICAL ARTICLE</b> |
| <p><b>9. Microbiological and cytological response to dental implant healing abutment</b><br/>         Wifaq M.Ali Al-Wattar, Warkaa M.AI-Wattar, Afya Sahib Diab Al-Radha<br/> <i>Pages 891-898</i></p>  | <b>CLINICAL ARTICLE</b> |
| <p><b>10. Tooth Mortality in Concurrent Cigarettes Smoking and Khat Chewing in Yemeni Population</b><br/>         Fouad Hussain Al- Bayaty, Nidhal Wahid Ali, Aqil Daher, Saba F.Hussain, Mohd Masood<br/> <i>Pages 899-904</i></p>  | <b>CLINICAL ARTICLE</b> |

## CLINICAL ARTICLE

- 11. The Correlation between Mother's Knowledge and Parenting Toward Childhood Caries in the Remote Area**

Leny Marlina A. Pinat, Darmawan Setijanto, Taufan Bramantoro  
Pages 905-908

## CLINICAL ARTICLE

- 12. Gingival Recession and Dentine Hypersensitivity in Periodontal Patients: is It Affecting Their Oral Health Related Quality of Life?**

Masud M, Al-Bayat FH, Muhamed NAH, Alwi AS, Takiyudin Z, Hidayat MFH  
Pages 909-914

## CLINICAL ARTICLE

- 13. Prevalence of Medically Compromised Children Regarding Dental Caries and Treatment Needs in Wahidin Sudirohusodo Hospital**

Harun Achmad, M. Hendra Chandha, Sri Harun, Imam Sudjarwo, Muliaty Yunus, Rahmah K. Rusdi, Putri Khairunnisa  
Pages 915-920

## CLINICAL ARTICLE

- 14. Relationship between Oral Health Status with Knowledge, Attitude, And Behavior of Elementary School Children**

Fuad Husain Akbar, Rini Pratiwi, Reagan Cendikiawan  
Pages 921-926

## CLINICAL ARTICLE

- 15. The Oral Health of Elderly Residents in a State Institution in Jakarta: A Preliminary Study**

Dwi Ariani, Febrina Rahmayanti, Harum Sasanti, Masita Mandasari  
Pages 927-932

## CLINICAL ARTICLE

- 16. Pandan Leaves (Pandanus Amaryllifolius) Aromatherapy and Relaxation Music to Reduce Dental Anxiety of Pediatric Patients**

Seno Pradopo, Betadion Rizki Sinaredi, Bernadeth Vindi Januarisca  
Pages 933-937

## CLINICAL ARTICLE

- 17. The Relation of Follicle Stimulating Hormone and Estrogen to Mandibular Alveolar Bone Resorption in Postmenopausal Women**

Susi R Puspitadewi, Pitu wulandari, Sri Lelyati C Masulili, Elza I Auerkari, Hanna Bachtiar Iskandar, Izzet Yavuz, Lindawati S Kusdhany  
Pages 938-944

## CLINICAL ARTICLE

- 18. Cross-Cultural Adaptation and Psychometric Properties of The Indonesian Version of Servqual For Assessing Oral Health Service Quality**

Yohanes Tebai, Diah Ayu Maharani, Anton Rahardjo  
Pages 945-951

## EXPERIMENTAL ARTICLE

- 19. Effect of Endodontic Instrumentation Technique on Root Canal Geometry**

Miranda Stavileci, Veton Hoxha, Mehmet Ömer Görduysus, Kjell Laperre, Ilkan Tatar, Rina Hoxha  
Pages 952-957

## EXPERIMENTAL ARTICLE

**20. No Recombinant EGF and bFGF is Required on HUVECs Culture Supplemented with Human Platelet Lysate**

Lisa Rinanda Amir, Ria Puspitawati, Hazriani R, Shafira Imanina, Harvi Damayanti, Nadira Dwiyan, Afridayanti Nurwulan, Mindya Yuniastuti, Erik Idrus

Pages 958-963

## EXPERIMENTAL ARTICLE

**21. The Effect of Light and Dual Cured Resin Cement to the Color of Porcelain Laminate Veneer**

Melissa Delania, Ira Tanti, Roselani W. Odang, Leonard C. Nelwan

Pages 964-969

## EXPERIMENTAL ARTICLE

**22. Loss of Taste Buds in The Circumvallate Papillae of Rat Tongue after Ovariectomy**

Ervin Rizali, Widurini Djaja Suminta, Budiharto Sudiroatmodjo, Nadhira Haifa Prabowo, Elza Ibrahim Auerkari

Pages 970-974

## EXPERIMENTAL ARTICLE

**23. The Effect of Brotowali Stem Extract (Tinospora Crispa) Towards Increasing Number of Lymphocytes in the Healing Process of Traumatic Ulcer on Diabetic Wistar Rat**

Ira Arundina, Indeswati Diyatri, Theresia Indah Budhy, Foo Yau Jit

Pages 975-980

## EXPERIMENTAL ARTICLE

**24. Antibacterial Effects of Bioceramic and Mineral Trioxide Aggregate Sealers Against Enterococcus Faecalis Clinical Isolates**

Rusdiana, Munyati Usman, Ratna Meidyawati, Endang Suprastiwi, Dewa Ayu NPA

Pages 981-986

## EXPERIMENTAL ARTICLE

**25. Different Food Hardness Affect Memory**

Wahyuning Ratih Irmalia, Jenny Sunariani, Christian Khoswanto

Pages 987-990

## EXPERIMENTAL ARTICLE

**26. Brotowali Extract (Tinospora Crispa) for Oral Traumatic Ulcer in Diabetes Mellitus Wistar Rat**

Retno Indrawati Roestamadji, Ira Arundina, Indeswati Diyatri, Dewi Tamara Sambodo,

Wahyuning Ratih Irmalia

Pages 991-996

## EXPERIMENTAL ARTICLE

**27. Orthodontists Reproducibility and Accuracy in Linear and Angular Measurement on 2d Digital and 3d Cbct Radiographic Examination**

Dwita Pratiwi, Benny Mulyono Soegiharto, Krisnawati, Brama Kiswanjaya

Pages 997-1004

## CASE REPORT

**28. Reconstruction with fibula transfer and implant supported overdenture for a mandibular defect: A multidisciplinary approach**

Tri Ardi Mahendra, Nina Ariani, Saraventi Mursid, Parintosa Atmodiwirjo, Kristaninta Bangun, Dwi Ariawan

Pages 1005-1009

## CASE REPORT

**29. An Overjet Reduction of Class II, Division 1 Malocclusion in Twin Block Dentofacial Orthopedic and Fixed Orthodontic Treatment: Case Report**

Harun Achmad, Mardiana Adam, Sri Oktawati, Sri Ramadhany Karim, Hasanuddin Thahir, Rini Pratiwi, Annisa Wicita

Pages 1010-1016

TABLE OF CONTENTS / 2017; 10 (3)

## CASE REPORT

- 30. Impact of Delay on Diagnosis and Treatment of Oral Squamous Cell Carcinoma: Three Cases Report**

Hamdatun Rakhmania, Irna Sufiawati

Pages 1017-1020

## REVIEW

- 31. The Promising Clinical Applications of Growth Factors in Periodontal Regeneration: A Literature Review**

Ichaya Yiemwattana

Pages 1021-1028

## REVIEW

- 32. Role of Oral and Maxillofacial Surgeon in Detecting Domestic Violence**

Anand Deep Shukla, Abhay T Kamath, Chithra A

Pages 1029-1031

## REVIEW

- 33. A Review of Ribonucleotide Reductase and Cancer Therapies**

Khor Goot Heah, Nurul Ain Bt Khoruddin, Nur Rawaidah Bt Mohd Shobri, Syairah Nabila Bt Suhaimi, Tang Thean Hock, Mohd Yusmialdil Putera Mohd Yusof

Pages 1032-1037

MEDICINE

## CLINICAL ARTICLE

- 34. Digital Hematocrite Test, a New Breakthrough in the Medical Equipment for Non Invasive Hematocrite Level Measurement in Dengue Patients**

Prihartini Widiyanti, Nasronudin

Pages 1038-1041

## CLINICAL ARTICLE

- 35. Bone Quality, Biochemical and Blood Markers in High Power Electrical Workersf**

Cemil SERT, Pelin YAZGAN

Pages 1042-1047

## CLINICAL ARTICLE

- 36. The Relation of Reflux Finding Score and Reflux Symptom Index with Middle Ear Pepsin Level in Chronic Suppurative Otitis Media**

Ayu Astria Sriyana, Susyana Tamin, Syahrial M. Hutahuruk, Saptawati Bardosono, Ina S. Timan,

Ratna D. Restuti

Pages 1048-1051

## CLINICAL ARTICLE

- 37. Occupational Risk Factors for Acute Fatigue Symptoms among Indonesian Beverage Industry Workers**

Baiduri Widanarko, Robiana Modjo

Pages 1052-1054

## CLINICAL ARTICLE

- 38. A Study of Readmission Rates and the Implementation of National Health Insurance**

Kurnia Sari, Pujiyanto, Atik Nurwahyuni, Atmiroseva

Pages 1055-1059

## EXPERIMENTAL ARTICLE

- 39. Protective Effect of Propolis Extract in Kidney Male Mice (Mus musculus) Induced by Lead Acetate**

Citrasari Henra, Wiwik Misaco, Hani Plumeriastuti

Pages 1060-1065

TABLE OF CONTENTS / 2017; 10 (3)

## EXPERIMENTAL ARTICLE

**40. Maturity and Apoptosis Rate of Cumulus - Oocyte Complex in Aceh Cattle after in Vitro Maturation**

Hamny Hamny, Widjiati Widjiati, Aulanni'am Aulanni'am, Budianto Panjaitan

Pages 1066-1069

## EXPERIMENTAL ARTICLE

**41. Hylocereus Polyrhizus Peel Ethanol Extract- The Potential Effect to Tumor Necrosis Factor- $\alpha$ , Macrophage, and Matrix Metalloproteinase-9 in Endometriosis Mice**

Anindya Hapsari, Hendy Hendarto, Widjiati

Pages 1070-1073

## EXPERIMENTAL ARTICLE

**42. Effect of Combined Cryoprotectant of Ethylen Glicol and Propanodiol on Embryo Cryopreservation to Blastomere Cell Apoptosis and Blastocyst Quality**

Epy Muhammad Luqman, Widjiati, Suryo Kuncorojakti

Pages 1074-1079

## EXPERIMENTAL ARTICLE

**43. Effectivity of Insulin Transferrin Selenium and Bovine Serum Albumin Addition on In Vitro Culture Medium on Fertilization and Blastocyst Rate of Mice (*Mus musculus*)**

Widjiati, Epy Muhammad Luqman, Benjamin Christoffel Tehupuring

Pages 1080-1083

## REVIEW

**44. Effect of Radiofrequencies Emitted from Mobile Phones and Wi-Fi on Pregnancy**

Hava Bektas, Suleyman Dasdag

Pages 1084-1095

## The Oral Health of Elderly Residents in a State Institution in Jakarta: A Preliminary Study

Dwi Ariani<sup>1</sup>, Febrina Rahmayanti<sup>2</sup>, Harum Sasanti<sup>2</sup>, Masita Mandasari<sup>2\*</sup>

1.Oral Medicine Residency Program, Faculty of Dentistry, Universitas Indonesia, Jakarta, Indonesia.

2.Department of Oral Medicine, Faculty of Dentistry, Universitas Indonesia, Jakarta, Indonesia.

### Abstract

The government is obliged to guarantee the availability of health care facilities and assistance for elderly individuals. There have been only a few studies of oral lesions in the elderly in Indonesia. To describe the oral health status of elderly residents of state institution in Jakarta.

Participants were recruited via the consecutive sampling method. Of 220 elderly residents, 49 met the inclusion criteria. Socio-demographic data and medical histories were obtained from the medical records of the institution. All the patients underwent a clinical oral examination, which included Oral Hygiene Index-Simplified (OHI-S), Mucosal Plaque Index (MPI), and Salivary Flow Rate (SFR) measurements. The participants were also questioned about their oral habits, and any oral lesions were recorded.

The prevalence of oral lesions was 55.1% (n=27), with only 20.24% (n=10) of elderly residents lesion free. The most common oral lesion was melanin pigmentation. None of the residents had severe pathological lesions, such as a malignancy or deep infection.

This study found the most elderly subjects in the state institution was in poor oral health, implying that the government's aim to promote the well-being of elderly population has not been achieved.

Clinical article (J Int Dent Med Res 2017; 10(3): pp. 927-932)

**Keywords:** Elderly, oral health, residential care homes.

**Received date:** 08 September 2017

**Accept date:** 17 October 2017

### Introduction

One aim of the Sustainable Developmental Goals 2030 of the United Nations is to ensure healthy lives and promote the well-being of all people at all ages, including the elderly.<sup>1</sup> The Indonesian government's commitment to this goal is stated in the Ministry of Health regulation, which obliges the government to guarantee the availability of health care facilities and assistance to elderly individuals. Health problems due to natural degenerative processes are a common problem among the elderly.<sup>2-4</sup> Based on Riskesdas 2013, a report by the Ministry of Health on basic health research, the most prevalent diseases in the elderly were noninfectious diseases, such as

hypertension, osteoarthritis, dental-mouth problems, chronic obstructive pulmonary disease, and diabetes mellitus. State institutions for the elderly should be places of empowerment and maintenance of health and serve as an indicator of the oral health of the elderly population as a whole, especially elderly individuals with degenerative diseases. Such institutions are also specifically intended to enable resocialization of abandoned elderly individuals, allowing them to live a reasonably independent life. The government's duty includes the provision of health services and referrals to local primary care centers to ensure the oral health of residents in such institutions.<sup>5,6</sup>

Several studies in various countries have examined the oral health status and prevalence of systemic disease in elderly populations. According to many of these studies, the oral health status of the elderly is poor, illustrating that this is a widespread problem. Socio-demographic factors influence the prevalence, clinical patterns, and onset rates of oral diseases.<sup>7-9</sup>

Several studies have examined the epidemiology of oral mucosal diseases among

#### \*Corresponding author:

Masita Mandasari, DDS, Ph.D.  
Lecturer in Oral Medicine, Department of Oral Medicine  
Faculty of Dentistry, Universitas Indonesia.  
Jalan Salemba Raya No. 4 Jakarta Pusat, Jakarta 10430,  
Indonesia.  
E-mail: masita.mandasari@ui.ac.id

the institutionalized elderly in Jakarta. Sarsito et al (1997) reported that of 347 elderly residents in six government residential care homes and five private care homes in Jakarta, 60.5% had at least one oral mucosal disease, and 70.9% had at least one systemic disease, highlighting the need for appropriate oral and dental services for elderly individuals.<sup>10</sup> Anggraini et al (2011) in a study of 87 elderly individuals in a state institution (Tresna Werdha Budi Mulia 03) in Ciracas, East Jakarta reported that 92% of residents had at least one oral lesion and that 37.9% had systemic diseases.<sup>11</sup>

The purpose of this study was to describe the oral health and systemic health status of elderly individuals in a government institution, Tresna Werdha Budi Mulia 04, Cengkareng, West Jakarta, Indonesia. The findings can help shed light on the epidemiology of oral lesions among elderly individuals in Indonesia and help identify risk factors for oral lesions. This study can also serve as a baseline for future studies aimed at identifying ways of improving the oral health of the general population in Indonesia, especially the elderly.

### Materials and methods

The study population of Tresna Werdha Budi Mulia 04 consisted of 220 elderly residents. This was a cross-sectional study in which participants were recruited via consecutive sampling. The inclusion criteria were aged more than 60 years and voluntary participation in the study. The exclusion criteria were aged over 60 years with a mental disorder or an incapacitating illness. Of the 220 subjects, 49 met the inclusion criteria. This study was approved by the Ethical Committee of the Faculty of Dentistry, Universitas Indonesia, Jakarta. Informed consent was obtained from all the elderly individuals who participated in the study.

Socio-demographic data and medical histories were obtained from the medical records of the institution. All the subjects participants underwent a clinical oral examination according to standard procedures by experienced dentists. The dentists examined each patient and recorded the following: Oral Hygiene Index-Simplified (OHI-S); Decayed, Missing, Filled-Teeth (DMF-T) index; Papilla Bleeding Index (PBI), Mucosal Plaque Index (MPI), salivary pH of unstimulated salivary flow rate (SFR), and

stimulated SFR, as well as oral habits and dental condition. All the measurements were performed according to standard guidelines<sup>12-14</sup>. The clinical diagnosis of oral mucosa lesions was made by calibrated examiners in accordance with the Clinical Classification for the Diagnosis and Grouping of Oral Mucosa Lesions. Oral mucosal lesions were classified as a white, red, or pigmented; ulcerative or vesiculobulbous; or oral soft tissue enlargements.<sup>15</sup> For documentation, color photographs were taken of all the lesions with a digital camera.

### Statistical analysis

Data were analyzed using the Statistical Package for Social Sciences (SPSS) for Windows 22.0 version.

### Results

Table 1 shows the socio-demographic data on the elderly subjects. Of the 220 elderly residents, 49 met the inclusion criteria and were included in the study. Females were more common than men, with a ratio of 3:1. The mean age  $\pm$  SD was  $70.49 \pm 7.5$  years old. The participants were categorized into three groups according to age: young elderly (aged 60–69 years, 42.9%), mid-old (aged 70–79 years, 38.3%), and oldest-old (older than 80 years, 18.4%).

Socio-demographic		N	Percentage (%)
Sex	Male	11	22.4
	Female	38	77.6
Age	60–69 (young elderly)	21	42.9
	70–79 (mid-old)	19	38.8
	$\geq 80$ (oldest-old)	9	18.4
Education	No formal	39	79.6
	Primary	7	14.3
	Secondary	1	2
	High	1	2
Occupation	University	1	2
	Unemployed	23	46.9
	Informal	24	49
	Formal	2	4.1
Race	Malayan Mongoloid	47	95.9
	Asiatic Mongoloid	1	2
	Caucasian	1	2

**Table 1.** Socio-demographic data on the elderly subjects.

Most of the elderly subjects had no formal education or had dropped out of school (79.6%), and were jobless (46.9%) or had informal jobs (49%), such as scavengers, beggars, homeless, drivers, servants, traders, and farmers, before they become residents of the institution. With regard to racial classification, the majority of the participants were Malayan Mongoloid (95.9%), with only a few Asiatic Mongoloid and Caucasian

(4%) subjects.<sup>16</sup>

Most of the subjects had systemic diseases (87.8%), with only 6 (12.2%) never having received a diagnosis of a systemic disease (Table 2). Others had been diagnosed with flu, coughs, urticaria, or pharyngitis. According to the medical records, none of the participants had a history of heart disease, although some had been prescribed antiarrhythmics and calcium antagonists.

Oral hygiene and habits	Frequency	n	Percentage
Teeth brushing	Less than once a day	8	16.3
	Once a day	3	6.1
	Twice a day	30	61.2
	Three times a day	7	14.3
	More than three times a day	1	2
Tongue brushing	No	32	65.3
	Yes	17	34.7
Mouthwash	No	45	91.8
	Yes	4	8.2
Flossing	No	49	100
	Yes	0	0
Dental treatment	Never	34	69.4
	Ever	15	30.6
Denture wearing	Never	46	93.3
	Ever	3	6.1
Smoking	Never	33	67.3
	Ever	16	32.7
Drinking alcohol	Never	47	95.9
	Ever	2	4.1

**Table 2.** Prevalence of systemic disease and drug use among the elderly.

Almost half of the subjects (44.49%) were taking no type of medication, and 27 (55.1%) were using multiple medications for a systemic disease. The most common medication used was nonsteroidal anti-inflammatory drugs. Three subjects had been prescribed antituberculosis agents, although they had not been diagnosed with tuberculosis.

Oral hygiene and habits	Frequency	n	Percentage
Teeth brushing	Less than once a day	8	16.3
	Once a day	3	6.1
	Twice a day	30	61.2
	Three times a day	7	14.3
	More than three times a day	1	2
Tongue brushing	No	32	65.3
	Yes	17	34.7
Mouthwash	No	45	91.8
	Yes	4	8.2
Flossing	No	49	100
	Yes	0	0
Dental treatment	Never	34	69.4
	Ever	15	30.6
Denture wearing	Never	46	93.3
	Ever	3	6.1
Smoking	Never	33	67.3
	Ever	16	32.7
Drinking alcohol	Never	47	95.9
	Ever	2	4.1
Betel chewing	Never	47	95.9
	Ever	2	4.1
Snacking	Seldom	11	22.4
	Often	9	18.4
	Often	29	59.2

**Table 3.** Oral hygiene and habits of the elderly.

In terms of oral hygiene habits, 61.2% brushed their teeth twice a day, but only 17%

brushed their tongue, and only 8.2% used a mouthwash. None of the participants ever flossed. Only 30.6% of the study group had visited a dentist in the past, although not regularly. The remainder had never visited a dentist. Only 6.1% wore dentures supplied by a dentist. For the rest of the subjects, most had edentulous ridges and had not received replacements for missing teeth (Table 3).

Variable	N	Minimum	Maximum	Mean	SD
OHI-S	49	0	6	3.12	1.939
DMF-T	49	0	32	18.67	9.965
PBI	49	0	3	1.028	0.977
MPI	49	2	4	2.55	0.765
pH saliva unstimulated	41	6	7	6.29	0.461
pH saliva stimulated	45	7	8	7.00	0.798

\*OHI-S: Oral Hygiene Index-Simplified  
DMF-T: Decay, Missing, Filled-Teeth  
PBI: Papillary Bleeding Index  
MPI: Mucosal Plaque Index

**Table 4.** OHI-S, DMF-T, PBI, and MPI, and salivary pH of the elderly.

Regarding poor lifestyle habits, 32.7% of subjects smoked, 4.1% drank alcohol, and 2% chewed betel. Of note, 77.6% of subjects reported snacking between meals.

Category	n	Percentage
<b>OHI-S</b>		
Poor (Score: 3.1-6)	28	57.1
Fair (Score: 1.2-3)	11	22.4
None (Score: -)	9	18.4
Good (Score: 0-1.2)	1	2
<b>DMF-T</b>		
Very high (Score: >24-32)	18	36.7
High (Score: >16-24)	12	24.5
Fair (Score: >8-16)	8	16.3
Low (Score: 0-8)	7	14.3
None (Score: -)	4	8.2
<b>PBI</b>		
Good (Score: 0-1.3)	28	57.1
Fair (Score: 1.4-2.7)	9	18.4
None (Score: -)	8	16.3
Poor (Score: 2.8-4)	4	8.2
<b>MPI</b>		
Good (Score: 2-4)	49	100

**Table 5.** Category of OHI-S, DMF-T, PBI, and MPI.

The mean (SD) score for the OHI-S index, DMF-T, PBI, and MPI (Table 4) was  $3.12 \pm 1.939$  (poor oral hygiene),  $18.67 \pm 9.965$  (a high risk of caries),  $1.028 \pm 0.977$  (good oral health), and

2.55 ± 0.765 (good condition of oral mucosa), respectively. Oral hygiene could not be examined in 18% of cases because the subjects were edentulous (Table 5). In the study, in the DMF-T category, 36% of the study population was classified as very high, which means that most of the subjects had lost their teeth, had a high prevalence of caries, and had many missing teeth. The oral status of 57% of the subjects was good according to the PBI, indicating that less than half of the study population had gingival and periodontal problems. The oral mucosal status of all the participants was good according to the MPI result obtained in this study.

The pH of unstimulated saliva was moderate, with a mean ± SD of 6.29 ± 0.461, and the pH of stimulated saliva was normal, with a mean (± SD) of 7.00 ± 0.798. In tests of unstimulated saliva in 41 participants, the minimum pH for unstimulated saliva was 6 (acid), and the maximum was 7 (neutral). In tests of stimulated saliva in 45 participants, the minimum pH for stimulated saliva was 7 (neutral), and the maximum pH was 8 (alkaline). The difference between the number of tests of unstimulated and stimulated saliva was due to three subjects not being able to produce saliva while chewing a wax film.

Salivary flow rate	n	Minimum	Maximum (ml/min)	Mean	Hyposalivation (n)	Percentage
Unstimulated	41	0.05	2.5	0.7732	4	8.2
Stimulated	45	0.1	8.5	2.3478	10	20.4

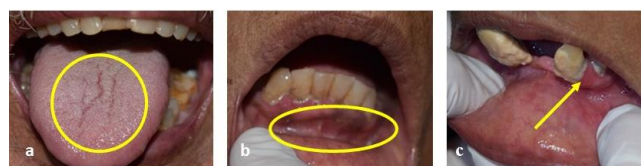
**Table 6.** Salivary flow rate of the elderly.

According to the data shown in Table 6, only 4 (8.2%) participants were classified as having hyposalivation based on the production of unstimulated saliva, and 10 (20.4%) participants were classified as having hyposalivation based on the production of stimulated saliva. Four elderly participants were unable to follow instructions and complained of a feeling of discomfort. Thus, the SFR was measured in only 45 of the 49 subjects. In the SFR test, unstimulated saliva production of less than 0.1 ml/min and less than 0.7 ml/min for stimulated saliva were denoted as hyposalivation and maximum score denoted the highest volume of saliva production. The prevalence of oral lesions in the study population was 55.1%. Normal variation was present in 42.1% of participants, and only 20.34% of the study population was lesion free (Table.7) The most common oral

manifestations were fissures of the tongue and oral varices. The most common oral lesions were melanin pigmentation and gingivitis (Fig. 1). No severe pathological lesions, such as malignancies or deep infections, were found.

Oral manifestation	n	Lesion	Percentage
Normal variation	25		42.1
Tongue fissure		12	
Varices		7	
Torus palatine		5	
Linea alba buccalis		1	
Red and pigmented lesions	19		36.7
Melanin pigmentation		11	
Smoker's melanosis		3	
Petechiae		3	
Anemia		1	
Angular cheilitis		1	
Oral soft tissue enlargement	8		16.3
Gingivitis		10	
Gingival abscess		6	
Fibroma		2	
Epulis		1	
Ranula		1	
White lesion	7		12.2
Frictional keratosis		5	
Ulcerative and vesicobulbous lesions	2		4.1
Aphthous-like ulcer		1	
Recurrent stomatitis aphthous		1	
Lesion free	10		20.24
Total		81	

**Table 7.** Prevalence of oral manifestations.



**Figure 1.** Most common normal variations and oral lesions in the elderly. (a) fissured tongue, (b) melanin pigmentation, and (c) gingivitis.

## Discussion

Studies of oral lesions and systemic diseases among the elderly are important, given the increasing number of elderly in Jakarta today. In the present study, the small number of males compared to females was due to lower numbers of male residents in the institution. The lower number of females may be explained by them having a longer life expectancy than males.<sup>6</sup>

The mean (± SD) age was 70.49 ± 7.5, which is considered in the category of mid-old, but nearly 50% of the residents were classified as young elderly (42.9%). Most of the elderly residents in the government institution were from a low socio-economic background and included displaced individuals and jobless who were been cared for by the government. According to Koeber, most Indonesians were categorized as

Malayan Mongoloid.<sup>16</sup> This study confirmed this finding, with 95.9% of the study population classified as Malayan Mongoloid, followed by Chinese, including Asiatic Mongoloid (2%), and Caucasians (2%).

As shown by the medical records, none of the elderly residents had a diagnosis of heart disease or tuberculosis. Nevertheless, four elderly residents were taking antiarrhythmics, one was taking a calcium antagonist, and three were taking antituberculosis agents. Two elderly residents were taking iron supplements, despite the absence of any laboratory report of a diagnosis of anemia. Only one elderly resident had oral manifestations indicative of anemia. Data from the medical records showed that drugs had been prescribed based on clinical symptoms, with no diagnostic tests, such as electrocardiograms, laboratory reports, sputum analysis, or x-ray examinations, conducted to support the clinical diagnosis and draw a definitive diagnosis. The latter was likely due to the high costs of such tests.

As shown by the results of the DMF-T index, the oral health of many of the participants fell into the "high" category. This finding was surprising, as 61.2% of the subjects stated that they brushed their teeth twice a day. The result could possibly be explained by the fact that most of these subjects had dementia. Alternatively, they may have been ashamed to admit that they neglected brushing their teeth as part of their daily routines. Agus et al (2011) in a previous study of the influence of oral hygiene practices on the oral health status of elderly residents in a state institution reported that most of the subjects were aware of the need to brush their teeth but that the time of brushing and frequency were inappropriate. This study also reported that oral hygiene habits, including the time and frequency of tooth brushing, significantly affected the health of periodontal tissue.<sup>17</sup>

In this study, more than half the subjects reported snacking between meal times and never receiving dental treatment, and almost none of the study population had dentures to replace their missing teeth. As most of the subjects were from a low socioeconomic background and had little formal education, it is highly likely that they had no access to oral health information and could not afford dental treatment.<sup>18,19</sup>

A previous study reported that both unstimulated and stimulated SFRs were lower in

older adults than in younger adults.<sup>14</sup> In this study, only 20.4% of subjects were categorized as having hyposalivation based on the stimulated SFR, and 55.1% of subjects were receiving medication. However, this study did not explore the relation between SFR and medication use. The measurement of saliva consisted of measurements of the SFR and unstimulated and stimulated salivary pH. Variation in the time of saliva collection can contribute to variability between studies. Low salivary flow or hyposalivation leads to drying of oral mucosa, inefficient food bolus formation and transport, demineralization of dentition, mucosal ulcerations, altered oral flora, impaired taste and smell sensations, and discomfort while eating.

The prevalence of oral lesions in this study (55.1%) was similar to that reported in a study conducted in Chile (53%), whereas it was higher than that found in studies conducted in Brazil (21.55%) and Malaysia (10.8%) and lower than that found in a study in Yemen (77.1%). However, denture wearing in the Chilean study was higher (65%) than in this study (6.1%). The most common lesions were associated with denture stomatitis and irritative hyperplasia.<sup>9,20–</sup>

<sup>22</sup>In the studies conducted in China and Yemen the most common oral manifestation was fissured tongue. In a study in Cambodia, a fissured tongue was the second most common oral manifestation. However these results were obtained from studies which includes elderly, young adults, and children subjects.<sup>13,16,17</sup> In the present study, the most common lesion in the elderly was melanin pigmentation 22.45% (n=11). This finding was expected due to the ethnic predisposition of the Mongoloid race to more melanin pigment than Caucasians. The pigmentation could also have been due to smoking, although this was unlikely.<sup>23,20</sup>

The present study has a number of limitations. Of the 220 residents, only 49 (22.3%) met the inclusion criteria and were included in the study. The other 171 (77.7%) elderly residents were excluded for various reasons, such as severe illness resulting in complete incapacitation, mental disorders, and aged younger than 60 years old. As only a small number of elderly took part in this preliminary study, the data may not represent the elderly in Jakarta. This study also has several other limitations, such as the elderly subjects were easily exhausted, so the examination was conducted in short duration and

absence of repeated examinations which might affect data collection.

This was a preliminary study. Further studies will involve data collection from all government institutions for the elderly in Jakarta. The analysis of this larger data set will provide a better picture of the oral health profile of institutionalized elderly residents. A national-level survey of the oral health of elderly individuals living in the community is recommended, in addition to the development of oral health education and dental health care provisions for the aged in the community. Finally, the residents with oral lesions were advised to seek the services of a dentist.

### Conclusions

This study found the most elderly subjects in the state institution was in poor oral health, implying that the government's aim to promote the well-being of elderly population has not been achieved. This study may become one of the foundation for the government to establish oral health promotion programs and in the long term, to improve the quality of life of elderly population.

### Acknowledgments

We would like to acknowledge of Dr. Anandina Irmagita for her contribution in data collection.

### Declaration of Interest

The authors report no conflict of interest and the article was supported by Universitas Indonesia PITTA Grant 2017.

### References

1. United Nations. The Sustainable Development Goals Report. 2016.
2. Ernawati MG, Kusdhany LS, Iskandar HH. Prediction Index of Total Blood Testosterone Level in Elderly Men. *J Int Dent Med Res*. 2013;9 (Special Issue):312-6.
3. Masulili SLC, Tadjoedin FM, Masulili C, Gita F, Indrasari M, Kusdhany L. Periodontal attachment loss and bone mineral density in elderly patients. *J Int Dent Med Res*. 2016;9(3):233-236.
4. Rahardjo A, Adinda S, Nasia AA, et al. Oral health literacy in Indonesian adolescent. *J Int Dent Med Res*. 2015;8(3):123-7.
5. Ministry of Health of the Republic of Indonesia. PMK No.25 on the National Plan of Action for the Elderly in 2016-2019. Jakarta, Indonesia; 2016.
6. Data and Information Center Ministry of Health Republic of Indonesia. Elderly Situation in Indonesia. *Minist Heal Repub Indones*. 2016:1-12.
7. Yani RWE. Behavior of Maintaining Dental and Oral Health Among Dayak Paramasan Tribe in Kabupaten Banjar, South Kalimantan. *J Int Dent Med Res*. 2015;9(December):169-172.
8. Gheno JN, Martins MAT, Munerato MC, et al. Oral mucosal lesions and their association with sociodemographic, behavioral, and health status factors. *Braz Oral Res*. 2015;29(1):1-6.
9. Mendes DC, Poswar Fde O, de Oliveira MV, et al. Analysis of socio-demographic and systemic health factors and the normative conditions of oral health care in a population of the Brazilian elderly. *Gerodontology*. 2012;29(2):206-14.
10. Sarsito AS, Sumariyah S, Nugroho HS, Pradono SA. Epidemiological Study On Oral Mucosal Diseases Among The Institutionalized Elderly in Jakarta. *J Kedokt Gigi Univeritas Indones*. 1997;4 (Special Issue KPPKIG XI):596-602.
11. Anggraini D. Oral Mucosa Conditions and Lesions of Elderly Residents in a State Institution in Ciracas, Jakarta. 2011.
12. Kramer IR, Pindborg JJ, Bezroukov V, Infirri JS. Guide to epidemiology and diagnosis of oral mucosal diseases and conditions. World Health Organization. *Community Dent Oral Epidemiol*. 1980;8(5):1-26.
13. Petersen PE, Baez RJWHO. Oral Health Surveys Basic Methods. 5th ed. Geneva: World Health Organization; 2013.
14. Affoo RH, Foley N, Garrick R, Siqueira WL, Martin RE. Meta-Analysis of Salivary Flow Rates in Young and Older Adults. *Dent Oral Heal*. 2015:2142-51.
15. Carpenter W, Jacobsen P, Eversole L. Two Approaches to the Diagnosis of Lesions of the Oral Mucosa. *J Calif Dent Assoc*. 1999;27(8):619-21.
16. Koeber AL. Three Essays on the Antiquity and Races of Man. California: Berkeley, University of California Press; 1922.
17. Agus H. Effect of Mouth Hygiene Practice Against the Health Profile of Oral Cavities of Elderly Residents in a State Institution in Ciracas, Jakarta. 2011.
18. Chiu C, Malhotra R, Tan SM, et al. Dental health status of community-dwelling older Singaporeans: findings from a nationally representative survey. *Gerodontology*. 2017;34(1):57-67.
19. Baharvand M, Soleimani M, Soheila M, Hamed M, Sabour S. Oral health-related quality of life and treatment needs in a group of Iranian dental patients. *J Int Dent Med Res*. 2015;8(2):68-76.
20. Ali TBT, Razak LA, Latifah RJR, Zain RB. An epidemiological survey of oral mucosal lesions among elderly Malaysians. *Gerodontology*. 1995;12(1):37-40.
21. Espinoza I, Rojas R, Aranda W, Gamonal J. Prevalence of oral mucosal lesions in elderly people in Santiago, Chile. *J Oral Pathol Med*. 2003;32(10):571-5.
22. Al-Maweri S, Al-Sufyani G, Tarakji B, Shugaa-Addin B, Al-Jamaei A. Oral mucosal lesions in elderly dental patients in Sana'a, Yemen. *J Int Soc Prev Community Dent*. 2015;5(7):12.
23. Matranga D, Di Fede O, Paderni C, et al. Demographic and behavioural profiles of patients with common oral mucosal lesions by a homogeneity analysis. *Oral Dis*. 2012;18(4):396-401.

Dear Prof. Dr. Masita Mandasari,

Your paper looking acceptable titled " **The Oral Health of Elderly Residents in a State Institution in Jakarta: A Preliminary Study** ", but it should be revise especially references section according to the JIDMR guideline <http://www.ektodermaldisplazi.com/journalauthorguidelines.htm> .

The references should be unique with a same character and improve with some of references which are below. You should cite some of them.

References 2, 3, 7, and 13 should be in English.

After the revisions you can submit your paper.

Sincerely yours.

1. Periodontal Attachment Loss and Bone Mineral Density in Elderly Patients

Sri Lelyati C Masullil, Fatmah Maria Tadjoedin, Chaidar Masullil, Farisa Gita, Muslita Indrasari,  
Lindawati S Kusdhany

Journal of International Dental and Medical Research

2018 Volume 9 - Number 3

Pages 233-238

2. ORAL HEALTH LITERACY IN INDOONESIAN ADOLESCENT

Anton Rahardjo, Syifa Adinda, Alvina Anin Nasia, Melissa Adiatman, Febriana Setiawati, Yuniardini Septorini Wismardhani, Diah Ayu Maharani

Journal of International Dental and Medical Research ISSN: 1309-100X

2015 Volume 8 - Number 3

Pages 123-127

3. Prediction Index of Total Blood Testosterone Level in Elderly Men

Maria G Ernawati, Lindawati S Kusdhany, Hanna HB Iskandar

Journal of International Dental and Medical Research ISSN: 1309-100X

2016: 9 (Special Issue, U.I. 1st International Workshop on Dental Research)

Pages 312-318

4. ORAL HEALTH-RELATED QUALITY OF LIFE AND TREATMENT NEEDS IN A GROUP OF IRANIAN DENTAL PATIENTS

Maryam Baharvand, Mohammad Soleimani, Soheila Manifar, Hamed Mortazavi, Siamak Sabour

Journal of International Dental and Medical Research ISSN: 1309-100X

2016 Volume 9 - Number 1

Pages 23-28

5. Behavior of Maintaining Dental and Oral Health Among Dayak Paramasan Tribe in Kabupaten Banjar, South Kalimantan

Risya Widi Endah Yuni

Journal of International Dental and Medical Research

2018 Volume 9 - Number 3

Pages 169-172

Dear Prof. Masita Mandasari,

Your manuscript entitled " The Oral Health of Elderly Residents in a State Institution in Jakarta: A Preliminary Study" has been successfully submitted to the JIDMR by e-mail and will be considered for publication in "Journal of International Dental and Medical Research".

We are sending your article for a peer-review and when we receive an evaluation we will inform you.

Thank for considering the manuscript for submission to the Journal of International Dental and Medical Research.

Please feel free to contact me with any questions or concerns.

Best Regards,

**Izzet YAVUZ**

*Editor-in-Chief and General Director*

Journal of International Dental and Medical Research ISSN 1309 - 100X

MSc, PhD, D Ped Dent.

Professor, Pediatric Dentistry

Faculty of Dentistry, University of Dicle

21280 Diyarbakir, TURKEY

E-mail: [jyavuz@dicle.edu.tr](mailto:jyavuz@dicle.edu.tr), [izzetyavuz@hotmail.com](mailto:izzetyavuz@hotmail.com)

ECTODERMAL DYSPLASIA GROUP - TURKEY

<http://www.ektodermaldisplazi.com>

Dear Prof. Dr. Masita Mandasari,

It's a great pleasure for me to inform you that your manuscript which titled "The Oral Health of Elderly Residents in a State Institution in Jakarta: A Preliminary Study" has been accepted and will be finalized for the coming issues.

Accept letter is at the attach.

Send us Transfer of Copyright Agreement please, it is necessarily before sending manuscript to press ([http://www.ektodermaldisplazi.com/journal/documents/Transfer\\_of\\_Copyright\\_Agreement.doc](http://www.ektodermaldisplazi.com/journal/documents/Transfer_of_Copyright_Agreement.doc)

).

Before sending manuscript to press, I will send to you the press ready copy for your final checking.

Sincerely yours.

**Izzet YAVUZ**

*Editor-in-Chief and General Director*

Journal of International Dental and Medical Research ISSN 1309 - 100X

MSc, PhD, D Ped Dent.

Professor, Pediatric Dentistry

Faculty of Dentistry, University of Dicle

21280 Diyarbakir, TURKEY

E-mail: [jyavuz@dicle.edu.tr](mailto:jyavuz@dicle.edu.tr), [izzetyavuz@hotmail.com](mailto:izzetyavuz@hotmail.com)

ECTODERMAL DYSPLASIA GROUP - TURKEY

**LEMBAR**  
**HASIL PENILAIAN SEJAWAT SEBIDANG ATAU *PEER REVIEW***  
**KARYA ILMIAH : JURNAL ILMIAH**

Judul Jurnal Ilmiah (Artikel) : The Oral Health of Elderly Residents in a State Institution in Jakarta: A Preliminary Study

Jumlah Penulis : 4 orang

Penulis Jurnal Ilmiah : Dwi Ariani, Febrina Rahmayanti, Harum Sasanti, Masita Mandasari

Status Pengusul : Penulis Pertama

Identitas Jurnal Ilmiah : a. Nama Jurnal : Journal of International Dental and Medical Research

b. Nomor ISSN : 1309-100X

c. Volume, Nomor, Bulan Tahun : Vol. 10, No.3 Oktober, 2017

d. Penerbit : Ectodermal Dysplasia Group Turkey

e. DOI artikel : -

f. Alamat Web Jurnal : (sudah diperbaiki)

URL ARTIKEL: <http://repository.moestopo.ac.id/index.php/UPDM/issue/view/30/dr-ariani-2018>

URL JURNAL: [http://www.jidmr.com/journal/wp-content/uploads/2017/12/15.D17\\_427\\_Masita\\_Mandasari.pdf](http://www.jidmr.com/journal/wp-content/uploads/2017/12/15.D17_427_Masita_Mandasari.pdf)

g. Terindeks di Scopus/Scimago/Web of Science/Clarivate: Ya/Q3

URL Indeks Scopus: <https://www.scopus.com/sourceid/19900193275>

URL Indeks Scimago: <https://www.scimagojr.com/journalsearch.php?q=19900193275&tip=sid&clean=0>

Kategori Publikasi Jurnal Ilmiah: ☒ Jurnal Ilmiah Internasional/Internasional Bereputasi

☐ Jurnal Ilmiah Nasional Terakreditasi

☐ Jurnal Ilmiah Nasional/Nasional Terindeks di DOAJ,CABI


Hasil Penilaian Peer Review :

Komponen Yang Dinilai	Nilai Maksimal Jurnal Ilmiah			Nilai Akhir Yang Diperoleh
	Internasional Bereputasi	Nasional Terakreditasi	Nasional	
	30			
a. Kelengkapan unsur suatu artikel ilmiah (10%)	3.00			2.40
b. Ruang lingkup dan kedalaman pembahasan (30%)	9.00			8.40
c. Kecukupan dan kemutakhiran data/informasi dan metodologi (30%)	9.00			8.40
d. Kelengkapan unsur dan kualitas terbitan/jurnal (30%)	9.00			8.40
Total = (100%)	30.00			27.60
Nilai Pengusul = (60%*27.60)= 16.56 (Dapat dipakai sebagai pemenuhan syarat khusus)				

Catatan penilaian artikel oleh *Reviewer* :

- Kesesuaian dan kelengkapan unsur isi jurnal:** sesuai dengan “Petunjuk bagi Penulis” (Penelitian: Judul, Penulis, Pendahuluan, Materi dan Metode, Hasil dan Pembahasan, Kesimpulan, Daftar Pustaka). Tulisan merupakan hasil penelitian. Substansi artikel sesuai bidang ilmu penulis pertama (Ilmu Penyakit Mulut). Ada benang merah dalam struktur penulisannya (skor=2.40).
- Ruang lingkup dan kedalaman pembahasan:** substansi artikel sesuai dengan ruang lingkup jurnal (**Ruang Lingkup:** aplikasi kesehatan gigi dan mulut lanjut usia di bidang kedokteran gigi dan kesehatan). Kedalaman artikel penelitian cukup baik (skor=8.40).
- Kecukupan dan kemutakhiran data/informasi dan metodologi:** kebaruan data-data penelitian tergolong baik, sebagian besar daftar pustaka yang dipakai terbaru, informasi yang disampaikan tergolong baik (skor=8.40).
- Kelengkapan unsur dan kualitas terbitan:** jurnal ini kelompok jurnal internasional bereputasi dan keberkalaannya baik (skor=8.40).

Jakarta, 16 April 2021  
Reviewer 1,

  
( Dr. Mirna Febriani, drg, M.Kes )  
NIK. 71.02.18.97.00.2.1.3.147  
Unit Kerja : Wakil Dekan I FKG UPDM (B)

**LEMBAR**  
**HASIL PENILAIAN SEJAWAT SEBIDANG ATAU *PEER REVIEW***  
**KARYA ILMIAH : JURNAL ILMIAH**

Judul Jurnal Ilmiah (Artikel) : The Oral Health of Elderly Residents in a State Institution in Jakarta: A Preliminary Study

Jumlah Penulis : 4 orang

Penulis Jurnal Ilmiah : Dwi Ariani, Febrina Rahmayanti, Harum Sasanti, Masita Mandasari

Status Pengusul : Penulis Pertama

Identitas Jurnal Ilmiah : a. Nama Jurnal : Journal of International Dental and Medical Research

b. Nomor ISSN : 1309-100X

c. Volume, Nomor, Bulan Tahun : Vol. 10, No.3 Oktober, 2017

d. Penerbit : Ectodermal Dysplasia Group Turkey

e. DOI artikel : -

f. Alamat Web Jurnal : (sudah diperbaiki)

URL ARTIKEL: <http://repository.moestopo.ac.id/index.php/UPDM/issue/view/30/dr-ariani-2018>

URL JURNAL: [http://www.jidmr.com/journal/wp-content/uploads/2017/12/15.D17\\_427\\_Masita\\_Mandasari.pdf](http://www.jidmr.com/journal/wp-content/uploads/2017/12/15.D17_427_Masita_Mandasari.pdf)

g. Terindeks di Scopus/Scimago/Web of Science/Clarivate: Ya/Q3

URL Indeks Scopus: <https://www.scopus.com/sourceid/19900193275>

URL Indeks Scimago: <https://www.scimagojr.com/journalsearch.php?q=19900193275&tip=sid&clean=0>

Kategori Publikasi Jurnal Ilmiah: ☒ Jurnal Ilmiah Internasional/Internasional Bereputasi

☐ Jurnal Ilmiah Nasional Terakreditasi

☐ Jurnal Ilmiah Nasional/Nasional Terindeks di DOAJ,CABI

Hasil Penilaian Peer Review :

Komponen Yang Dinilai	Nilai Maksimal Jurnal Ilmiah			Nilai Akhir Yang Diperoleh
	Internasional Bereputasi	Nasional Terakreditasi	Nasional	
	30			
a. Kelengkapan unsur suatu artikel ilmiah (10%)	3.00			3.00
b. Ruang lingkup dan kedalaman pembahasan (30%)	9.00			8.40
c. Kecukupan dan kemutakhiran data/informasi dan metodologi (30%)	9.00			8.40
d. Kelengkapan unsur dan kualitas terbitan/jurnal (30%)	9.00			8.40
Total = (100%)	30.00			28.20
Nilai Pengusul = (60%*28.20)= 16.92 (Dapat dipakai sebagai pemenuhan syarat khusus)				

Catatan penilaian artikel oleh <i>Reviewer</i> :	
1.	<b>Kesesuaian dan kelengkapan unsur isi jurnal:</b> isi jurnal lengkap (skor=3.00).
2.	<b>Ruang lingkup dan kedalaman pembahasan:</b> ruang lingkup jurnal sesuai dengan bidang penulis pertama ( <b>Ruang Lingkup:</b> aplikasi kesehatan gigi dan mulut lanjut usia di bidang kedokteran gigi dan kesehatan). Kedalaman artikel penelitian baik (skor=8.40).
3.	<b>Kecukupan dan kemutakhiran data/informasi dan metodologi:</b> kebaruan data-data penelitian tergolong baik, daftar pustaka yang dipakai terbaru dan lengkap (skor=8.40).
4.	<b>Kelengkapan unsur dan kualitas terbitan:</b> jurnal ini kelompok jurnal internasional bereputasi dan kualitas jurnal baik (skor=8.40).

Jakarta, 16 April 2021  
Reviewer 2,



( Ratih Widyastusi, drg, MS, Sp. Perio )  
NIK.61.04.17.87.00.2.1.3.088  
Unit Kerja : Kepala Departemen Periodonsia FKG UPDM (B)