

# Journal of Physics

*by* Jurnal Dosen Moestopo

---

**Submission date:** 09-Jul-2021 11:18AM (UTC+0700)

**Submission ID:** 1617399518

**File name:** Septalita\_2017\_J.\_Phys.\_Conf.\_Ser.\_884\_012040.DOCX (451.95K)

**Word count:** 3898

**Character count:** 20790

PAPER • OPEN ACCESS

14  
Dental erosion in 12-year-old school children living in Jakarta

To cite this article: A Septalita *et al* 2017 *J. Phys.: Conf. Ser.* **884** 012040

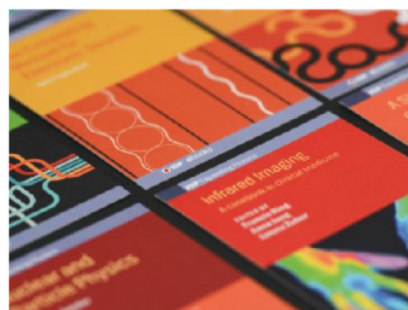
2  
View the [article online](#) for updates and enhancements.

Related content

- IT ain't what IT used to be  
29 Jeffrey Robinson
- Life cycle assessment of energy and CO<sub>2</sub> emissions for residential buildings in Jakarta, Indonesia  
30 U Surahman, T Kubota and A Wijaya
- Rapid urbanization and the need for sustainable transportation policies in Jakarta  
D Rukmana

Recent citations

- 36  
- A systematic review of dietary adds and habits on dental erosion in adolescents  
Alex Simon Chan *et al*



**IOP | ebooks™**

Bringing together innovative digital publishing with leading authors from the global scientific community.

Start exploring the collection—download the first chapter of every title for free.

## Dental erosion in 12-year-old school children living in Jakarta

A Septalita<sup>1</sup>, A Bahar<sup>2</sup>, A Agustanti<sup>3</sup>, A Rahardjo<sup>2</sup>, D A Maharani<sup>2\*</sup> and R  
salien<sup>4</sup>

<sup>1</sup>Department of Public Health Dentistry, Faculty of Dentistry, Universitas Moestopo, Jakarta

<sup>2</sup>Department of Preventive and Public Health Dentistry, Faculty of Dentistry,  
Universitas Indonesia, Jakarta

<sup>3</sup>Oral Epidemiology and Clinical Studies in Dentistry Research Cluster

<sup>4</sup>University College London, London, UK

\*E-mail: diah.ayu64@ui.ac.id

**Abstract.** This study assesses the dental erosion status of 12-year-old Indonesian children and studies the determinants of dental erosion of these children. The survey was performed in 2016 with ethics approval. A multistage cluster proportional to size random sampling method was adopted to select 12-year-old children in 24 primary schools in Jakarta. The parents were asked to complete a self-administered questionnaire concerning their children's diet and oral health habits. The children were examined by a single calibrated examiner. Detection of dental erosion followed basic erosive wear examination (BEWE) criteria. A total of 487 children participated in the survey. Most children (88%) had at least some signs of erosion (BEWE > 0), with dentin being involved in 50% of the cases (BEWE = 2). Dental erosion was significantly related to gender, the frequencies of citric tea consumption, parent's dental knowledge, father's education, and dental caries (OR = 3.148). The 12-year-old Indonesian school children who lived in Jakarta had signs of erosion, although severe erosion was not found. Screening programs should be provided to identify risk groups so early preventive measures can be taken.

### 1. Introduction

Dental erosion is a common condition that occurs all over the world. It became a topic of concern at the end of the 20<sup>th</sup> century, also becoming of interest to clinical dental practice and dental public health [1,2]. Epidemiological surveys in various countries showed a high prevalence of dental erosion in children [2,3]. The prevalence of dental erosion was found in 68% of school children in Australia in 2007, whereas in Sweden the figure was 75%, similar to the high prevalence of dental erosion in 12-year-old school children in Libya, which amounts to 90% [4-6]. An increased prevalence of dental erosion was also seen in the UK between 2000 and 2002, increasing by 45% in 2000 and 2001 and by 60% in 2002 [2]. Dental erosion is defined as the condition of tooth surface loss or enamel demineralization caused by chemical processes that do not involve bacterial activity [1,7]. Early symptoms of tooth erosion are characterized by white spots on the enamel surface that are round, smooth, and shiny under a microscope, and subsequently dissolve enamel layer by layer [7,8]. Further stages of dental erosion will result in more enamel loss, the tooth surface becoming more slippery and shiny with the rounded surfaces of the teeth becoming flat [9]. It can have an impact on aesthetics, chewing ability, and dentinal hypersensitivity, all of which may lead to complicated treatment and



high treatment costs if advanced erosion occurs [10]. Dental treatment for dental erosion can be very complex and challenging and early diagnosis is so very important.

Dental erosion is a multifactorial condition. Its etiology is related to sources that contain acid, either intrinsic or extrinsic, which affect teeth [11,12], and is modified by factors that affect the vulnerability of teeth such as para-functional habits (behavioral factors), saliva and tooth structure (biological factors), and pH and buffer capacity (chemical factors). Socio-economic factors, education, knowledge, and public health also are factors that influence the occurrence of dental erosion. With knowledge of the above conditions, dental erosion can be prevented as early as possible, for example, by diagnosing the risk factors for dental erosion [11,13,14]. The oral health status of 12-years-old school children become the main indicator measurement criteria in a variety of oral diseases. According to the WHO, this age group has become an global indicator for making comparisons between countries and monitoring trends of the disease through surveys [15]. Dental erosion status is measured in this age group because all permanent teeth, except the third molar, have erupted by this age [2,16]. This group is also commonly used because children of this age tend to be more cooperative in epidemiological studies; the age group is also easily identifiable and it is easy to ensure a subsequent visit because they are still in the school system. Thus, the scope of monitoring is clear, and a good or optimal homogeneous sample can be achieved [2,16]. This is the ideal age group for making measurements and assessing the status of dental erosion in permanent teeth.

Jakarta is the capital city of Indonesia and is a metropolitan city that has a large and varied population. Dietary habits become one risk factor for dental erosion—for example, drinking soft drinks, tea containing fruit (citric tea), which is made either individually or in packs, or acidic fruit juice [1,17,18]. These habits have started to appear in the school environment, exposing 12-years-old school children to dental erosion [17]. The ease of access to food and drinks that contain acid in the school cafeteria or the minimarkets in Jakarta can also increase the risk of dental erosion. In Indonesia, and Jakarta in particular, concern is focused on dental caries and oral diseases; little attention is paid to dental erosion, thus limiting the available data. Research regarding risk factors for dental erosion in Indonesia is limited to only one factor, despite the multi factorial nature of the disease. Thus, there is no research that examines those risk factors of dental erosion that are also associated with dental caries. Based upon the background described above, this study assesses the dental erosion status of 12-year-old Indonesian children, particularly in Jakarta, and studies the determinants of dental erosion for these children.

## 2. Materials and Methods

The survey was performed in 2016 with ethics approval. The study design was a cross sectional study with comparative and multivariate analysis to determine the association of dental erosion status and its contributing factors in 12-year-old school children in Jakarta. Multistage cluster proportional to size random sampling was adopted to select 12-year-old children in 24 primary schools in Jakarta, both public and private. This study included 487 students as the sample. The population was made up of healthy children who were not undergoing orthodontic treatment, were willing and cooperative to be study subjects, and whose parents were also willing to sign the informed consent. The participating parents were asked to complete a self-administered questionnaire concerning their children's diet and oral health habits. The questionnaire was adapted from the oral health questionnaires by Zhang's study in 2014 [1], followed by face and content validity with expert opinion. Additionally, a convenience sample of thirty children was used to pretest the questionnaire.

The children were examined by a single calibrated examiner. The examination was conducted in a health center at each school in an indoor setting under light from a portable head lamp, and used a ball-ended WHO CPI probe and disposable mirror. Detection of dental erosion followed basic erosive wear examination (BEWE) criteria [19–21]. During the survey, the examiner duplicated examinations in 43 children based on WHO recommendations for an intra-examiner reliability test, and the Kappa score was 0.93 (almost perfect agreement). Data from the clinical examinations and questionnaires were recorded, edited, coded, and entered into computer software (Microsoft Access). The analysis

was performed using computer software SPSS Statistics v.20. Univariate analysis was conducted to determine the frequency and proportion of variables in this study. Non-parametric tests were used to analyze the bivariate of the dependent variable (dental erosion) with some independent variables in the study. Finally, multivariate analysis with binary logistic regression was conducted to determine that the relation was significant ( $p < 0.25$ ) for all the independent variables on the dental erosion status with a backward procedure model.

### 3. Results and Discussion

#### 3.1 Results

A total of 487 children participated in this survey, of whom 95 were in Central Jakarta, 79 in West Jakarta, 161 in East Jakarta, 67 in South Jakarta, and 85 in North Jakarta (Thousand Islands). The majority of the participants were girls ( $n = 278$ , 57%), and most participants were Muslim (89%,  $n = 435$ ). The most common ethnicity of fathers was Java (35%,  $n = 173$ ); the most common ethnicity of mothers was also Java (36%,  $n = 179$ ). A total of 12% ( $n = 59$ ) of children were free of dental erosion (BEWE cumulative score of all 6 = 6 sextant), meaning that most children (88%) had at least some sign of erosion (BEWE > 0). There were no children with severe erosion (score BEWE = 3), and as many as 139 (29%) children had 1 or 2 sextants with distinctive erosion (score BEWE = 2) of the 428 children (88%) who had a score BEWE = 2. The total BEWE score of 6 sextants for every child had a range of 6 to 12 with a mean value of  $9.4 \pm 2.1$ . The BEWE mean of the scores (range 0–3) was  $1.9 \pm 0.3$ .

After bivariate analysis, variables such as gender, parental knowledge, experience of caries, father and mother's education, and behavior regarding visits to the dentist was significantly associated with BEWE score ( $p < 0.05$ ). Multivariate analysis using binary logistic regression with  $p < 0.25$  showed that the experience of dental erosion had a significant association with gender, frequency of drinking citric tea, caries experience, parents' knowledge, and father's education (Table 1).

**Table 1.** Dental erosion relationship with all the variables

Variables	B	OR	95% CI	p-value
Gender				
Girl	-0.457	0.633	0.427–0.940	0.023
Boy*				
Frequency of drinking citric tea				
At least 1x/2 days	-0.493	0.611	0.401–0.931	0.022
Less than 1x/2 days*				
Parents knowledge				
Low	-1.262	0.283	0.117–0.686	0.005
Medium	-0.900	0.407	0.231–0.716	0.002
High*				
Caries/DMFT score				
>1.2	1.147	3.148	2.101–4.717	0.001
≤1.2*				
Father's education				
<Senior high	0.909	2.481	1.385–4.444	0.001
Senior high				
>Senior high*	0.107	1.113	1.667–1.858	0.002

#### 3.2 Discussion

Oral health is an essential part of human health [22]. Epidemiological studies are essential to assess the patterns and needs of an illness, giving reliable information that is useful for the planning or evaluation of a health program [6,23]. As the capital of Indonesia, Jakarta was considered for a



preliminary study that could be used as a reference for other major cities in Indonesia. A multistage cluster proportional to size random sampling method was selected for this study. The total population in Jakarta inhabits six districts, each of which includes 8–10 sub-districts. Schools in this study were chosen randomly in each sub-district, with a total number of 1346 schools, both public and private. Twenty-four of these were included in this study, represented by 10–41 children from each school (based on district proportion). School data was accessed via the Jakarta Education Authorities website; thus, its validity is well guaranteed. Besides the validity of the data, measurements were conducted with duplication to ensure reliability. Duplication was conducted on the same day for one child in every ten who was examined, in accordance with the WHO. The result of this duplication formed the Kappa value, which was 0.93, indicating substantial agreement and the reliability of the examiner for dental erosion [24,25].

There is no definitive index or international standard for the measurement of dental erosion status, and there are several measuring devices that can be used [19,26–30]. In this study, BEWE was used because its scoring is easy and it has sensitivity and adequate specificity; thus, an epidemiological survey for dental erosion can be reached good and adequate data [19–21]. According to a previous study [1], BEWE as a measurement of dental erosion developed in 2007 following an international workshop on erosion indices, and it is a convenient index, although there is no agreement yet that BEWE is the best index [1]. The BEWE score in this study was measured by calculating the highest score from each sextant, resulting in an epidemiological survey that is considered fast, simple, and easy [15].

Study results revealed that almost all the 12-year-old school children living in Jakarta had dental erosion, with only 12% free from dental erosion with dentin involvement. This is similar to the results of a study conducted on 12-year-old school children living in Libya, wherein 90% of children were exposed to dental erosion [6]. This prevalence was higher when compared to another study conducted earlier in Hong Kong and southern China [1]. The difference may be attributed to geographical factors, socioeconomic factors, and eating habits. A study in Benghazi also found that gender was associated with dental erosion, with girls being more exposed to erosion than boys; this is also consistent with this study's results. This is possibly because in this study the participants were dominated by girls, who thus had more potential for having dental erosion than boys [6]. Another study reported increased prevalence of dental erosion in boys compared to girls, but in this study found no statistically significant association between dental erosion and gender [31]. Consistent with previous studies, this study showed that dental erosion is associated with the frequency of drinking citric tea, and risk factors such as the consumption of acidic drinks—for example, drinks containing sour or acidic fruits—was associated with dental erosion in 12-year-old school children in America [6,32]. Theories state that the extrinsic etiology of dental erosion is caused by exposure to acidic substance ( $\text{pH} < 6.8$ ); thus, more frequent acidic substance exposure against the teeth will increase erosion of the teeth. Tea has a pH of approximately 4.2 (acidic). Fruits that contain citrus such as lemon, orange, and apples have a pH of 1.8–2.4, 2.8–4.0, and 2.9–3.5 respectively. Citric tea was proven to contribute to dental erosion and this proved to be statistically significant [6,32].

Parents' knowledge about oral health and their level of education were associated with dental erosion incidence [1]. A study in Norway also proved that lower parental education levels have a relationship to a higher incidence of dental erosion [33]. Knowledge and education levels of parents affect decisions about a child's dietary intake of acid and a child's teeth cleaning habits; thus, it was proved that less knowledge and a lack of education can increase the risk of dental erosion and increase the incidence of dental erosion [1,33]. Children with caries experience had a significantly higher BEWE score; in this study it was proven that dental caries potentially becomes a risk factor for dental caries. Several studies support these results [1,5,34]. This is possibly because both diseases are multifactorial and caused by an acidic condition, although the specific effect of acids is different. Studies in Sri Lanka reported that dietary habits can carry a significant risk to dental erosion and dental caries because acid drinks usually also have added sugar to make the beverage taste good to

consumers [17,35]. Some studies also show the opposite—that dental caries is not statistically associated with dental erosion [17].

#### 4. Conclusion

In this study, many 12-year-old Indonesian school children who lived in Jakarta had signs of erosion, most of which had dental involvement. A high frequency of drinking citric tea, caries experience, lower levels of parental dental knowledge, lower father education, and being a girl were found to be positively associated with dental erosion. Screening programs can be provided to identify risk groups for early preventive measures, and this can strategically enhance the cost-effectiveness of dental treatment.

9

#### Acknowledgment

This study was supported by the Universitas Indonesia.

#### References

- [1] Zhang S, Chau A M, E C Lo and Chu C H 2014 Dental caries and erosion status of 12-year-old Hong Kong children. *BMC Public Health* **14** 7. doi:10.1186/1471-2458-14-7.
- [2] Dugmore C R and Rock W P 2004b The prevalence of tooth erosion in 12-year-old children. *British Dent. J.* **196** 279–82; Discussion 273. doi:10.1038/sj.bdj.4811040.
- [3] Lussi A, Hellwig E, Zero D and Jaeggi T 2006. Erosive tooth wear: diagnosis, risk factors and prevention. *Am. J. Dent.* **19** 319–25.
- [4] Kazoullis S, Seow W K, Holcombe T, Newman B and D Ford 2007 Common dental conditions associated with dental erosion in schoolchildren in Australia. *Pediatr. Dent.* **29** 33–39. <Go to ISI>://WOS:000253499700006.
- [5] Isaksson I 2013 on dental caries and dental erosion in Swedish young adults. *Swed. Dent. J. Suppl.* **232** 1–60.
- [6] Huew R, Waterhouse P, Moynihan P, Kometa S and Maguire A 2012 Dental caries and its association with diet and dental erosion in Libyan schoolchildren. *Int. J. Paediatr. Dent.* **22** 68–76. doi:10.1111/j.1365-263X.2011.01170.x.
- [7] Aguiar Y P C, Santos F G, Moura E F F, Costa F C M, Auad S M, Paiva S M and Cavalcanti A L 2014 Association between dental erosion and diet in Brazilian adolescents aged from 15 to 19: A population-based study. *Sci. World J.* **2014** 7. doi:10.1155/2014/818167.
- [8] Yip K H K, Smales R J and Kaidonis J A 2003 The diagnosis and control of extrinsic acid erosion of tooth substance. *Gen. Dent.* **2003** 350–3.
- [9] Von Fraunhofer J A and Rogers M M 2004 Dissolution of dental enamel in soft drinks. *Gen. Dent.* **52** 308–12.
- [10] Chu C H, Lam A and Lo E C M 2011 Dentin hypersensitivity and its management. *Gen. Dent.* **59** 115–22.
- [11] Lu A and Jaeggi T 2008 Erosion-diagnosis and risk factors. *Clin. Oral Invest.* **12** 5–13. doi:10.1007/s00784-007-0179-z.
- [12] Dugmore C R and Rock W P 2004a. A multifactorial analysis of factors associated with dental erosion. *British Dent. J.* **196** 283–86; discussion 273. doi:10.1038/sj.bdj.4811041.
- [13] Linnett V, Seow W K 2001 Dental erosion in children: A literature review. *Pediatr. Dent.* **23** 37–43. doi:10.1111/j.1834-7819.2010.1255.x.
- [14] Khan S and Shah S N. 2014. Frequency of dental erosion and risk factors – A study. *Pak. Oral Dent. J.* **39** 56–60.
- [15] WHO 2013 *Oral Health Surveys - Basic Method.* World Health Organization **1** 137.
- [16] Correr G M, Alonso R C, Correa M A, Campos E A, Baratto-Filho F and Puppini-Rontani R M 2009 Influence of diet and salivary characteristics on the prevalence of dental erosion among 12-year-old schoolchildren. *Dent. Children (Chicago, Ill.)* **76** 181–7.
- [17] Salas M M S, Dantasa R V F, Sarmento H R, Vargas-Ferreira F, Torriani D and Demarco F F

2014. Tooth erosion and dental caries in schoolchildren: Is there a relationship between them? *Braz. J. Oral Sci.* **13** 12–6.
- [18] Chu C H, Pang K K L and Lo E C M 2010 Dietary behavior and knowledge of dental erosion among Chinese adults. *BMC Oral Health* **10** 13. doi:10.1186/1472-6831-10-13.
- [19] Bartlett D, Ganss C and Lussi A 2008 Basic Erosive Wear Examination (BEWE): A new scoring system for scientific and clinical needs. *Clinical Oral Invest.* **12** 65–8.
- [20] Margaritis V, Mamai-Homata E and Koletsi-Kounari H 2011 Novel methods of balancing covariates for the assessment of dental erosion: a contribution to validation of a synthetic scoring system for erosive wear. *J. Dent* **39** 361–7. doi:10.1016/j.jdent.2011.02.007.
- [21] Margaritis V, Mamai-Homata E, Koletsi-Kounari H and Polychronopoulou A 2011. Evaluation of three different scoring systems for dental erosion: A comparative study in adolescents. *J. Dent.* **39** 88–93. doi:10.1016/j.jdent.2010.10.014.
- [22] Zhang S, Xu B, Liu J, Lo E C and Chu C-H 2015. Dental and periodontal status of 12-year-old dai school children in Yunnan Province, China: A cross-sectional study. *BMC Oral Health* **15** 117. doi:10.1186/s12903-015-0101-0.
- [23] Dugmore C R and Rock W P 2004b. The Prevalence of tooth erosion in 12-year-old children. *British Dent. J.* **196** 279–82; discussion 273. doi:10.1038/sj.bdj.4811040.
- [24] Landis J R and Koch G G 1977. The measurement of observer agreement for categorical data. *Biometrics* **33** 159–74. doi:10.2307/2529310.
- [25] Nurelhuda N M, Trovik T A, Ali R W and Ahmed M F 2009 Oral health status of 12-year-old school children in Khartoum state the Sudan; a school-based survey. *BMC Oral Health* **9** 1–9.
- [26] López-Frías F J, Castellanos-Cosano L, Martán-González J, Llamas-Carreras J M and Segura-Egea J J 2012 Clinical measurement of tooth wear: Tooth wear indices. *J. Clin Exp. Dent.* doi:10.4317/jced.50592.
- [27] Smith B G and Knight J K 1984 An index for measuring the wear of teeth. *British Dent. J.* **156** 435–8.
- [28] Eccles J D 1979 Dental erosion of nonindustrial origin. A clinical survey and classification. *J. Prosthetic Dent.* **42** 649–53.
- [29] Mulic A, Tveit A B, Wang N J, Hove L H, Espelid I and Skaare A B 2010 Reliability of two clinical scoring systems for dental erosive wear. *Caries Res.* **44** 294–9. doi:10.1159/000314811.
- [30] Abu-Ghazaleh S B, Burnside G and Milosevic A 2013 The Prevalence and associated risk factors for tooth wear and dental erosion in 15- to 16-year-old schoolchildren in Amman, Jordan. *Eur. Archives Paediat. Dent.* **4** 21–27. doi:10.1007/s40368-012-0006-3.
- [31] Habib M, Hottel T L and Hong L 2013 Prevalence and risk factors of dental erosion in American children. *J. Clinical Pediat. Dent.* **38** 143–8.
- [32] Asmyhr Ø, Grytten J and Holst D 2012 Occurrence of risk factors for dental erosion in a population of young adults in Norway. *Commun. Dent. Oral Epidemiol.* **40** 425–31. doi:10.1111/j.1600-0528.2012.00695.x.
- [33] Cheng R, Yang H, Shao M-Y, Hu T and Zhou X-D 2009 Dental erosion and severe tooth decay related to soft drinks: A case report and literature review. *J. Zhejiang Univ. Sci. B* **10** 395–9. doi:10.1631/j.1674-8525.200820245.
- [34] Auad S M 2009 Dental caries and its association with sociodemographics, erosion, and diet in schoolchildren from Southeast Brazil. *Pediat. Dent.* **31** 229–35.
- [35] Perera I and Ekanayake L 2010 Relationship between dietary patterns and dental caries in Sri Lankan adolescents. *Oral Health Prev. Dent.* **8** 165–72. <http://europepmc.org/abstract/med/20589251>.



## ORIGINALITY REPORT

---

44%

SIMILARITY INDEX

%

INTERNET SOURCES

44%

PUBLICATIONS

%

STUDENT PAPERS

---

## PRIMARY SOURCES

---

1

Shinan Zhang, Alex MH Chau, Edward CM Lo, Chun-Hung Chu. "Dental caries and erosion status of 12-year-old Hong Kong children", BMC Public Health, 2014

Publication

7%

2

H M Herisa, A Noerdin, Y K Eriwati. "The effect of theobromine 200 mg/l topical gel exposure duration against surface enamel hardness resistance from 1% citric acid", Journal of Physics: Conference Series, 2017

Publication

4%

3

Diah Ayu Maharani, Shinan Zhang, Shiqian Sherry Gao, Chun-Hung Chu, Anton Rahardjo. "Dental Caries and the Erosive Tooth Wear Status of 12-Year-Old Children in Jakarta, Indonesia", International Journal of Environmental Research and Public Health, 2019

Publication

3%

4

Alaa BaniHani, Jinous F. Tahmassebi. "What Is the Cost of Soft Energy Drinks to Our Health

1%

5

M Ikbal, R W Odang, M Indrasari, R S Dewi.  
"Influence of immediate loading on  
provisional restoration in dental implant  
stability", Journal of Physics: Conference  
Series, 2017

Publication

1 %

6

Eric C. Reynolds. "Manufacture of Milk and  
Whey Products: Fractionated Casein  
Ingredients—Recaldent", Elsevier BV, 2020

Publication

1 %

7

Mariele Vertuan, Beatriz Martines Souza,  
Victor Mosquim, Camila Vieira Silva et al.  
"Effect of TiF4 varnish after pre-treatment  
with proanthocyanidin or chlorhexidine on the  
progression of erosive dentin loss in the  
presence or absence of the demineralized  
organic matrix", Journal of the Mechanical  
Behavior of Biomedical Materials, 2021

Publication

1 %

8

Noorhazayti Ab Halim, Rashidah Esa, Hooi Pin  
Chew. "General and erosive tooth wear of 16-  
year-old adolescents in Kuantan, Malaysia:  
prevalence and association with dental  
caries", BMC Oral Health, 2018

Publication

1 %

9	Alisa Novianty Pratiwi, Diah Ayu Maharani. "Prevalence and Risk Factors of Tooth Erosion in Children", Journal of Medical Sciences, 2017 Publication	1 %
10	"Full Issue PDF", Operative Dentistry, 2018 Publication	1 %
11	Keyvan Moharamzadeh. "Tooth Wear", Wiley, 2018 Publication	1 %
12	N. Schlueter, B. Luka. "Erosive tooth wear – a review on global prevalence and on its prevalence in risk groups", British Dental Journal, 2018 Publication	1 %
13	Yuanita Lely Rachmawati, Anton Rahardjo, Diah Ayu Maharani. "Assessment of parents' and children's oral health-related behavior", Journal of Stomatology, 2018 Publication	1 %
14	Alex Simon Chan, Theresa Thein Kim Tran, Yi Hsuan Hsu, Stephanie Yue Sum Liu, Jeroen Kroon. "A systematic review of dietary acids and habits on dental erosion in adolescents", International Journal of Paediatric Dentistry, 2020 Publication	1 %

15

Zhiwu Wu, Rui Zhang, Li Cheng, Ruilie Cai, Hong Chen, Ran Cheng, Tao Hu. "The correlation of altitude with gingival status among adolescents in western China: a cross-sectional study", Environmental Geochemistry and Health, 2021

Publication

---

1 %

16

Mabel Miluska Suca Salas, Raquel Venâncio Fernandes Dantas, Hugo Ramalho Sarmento, Fabiana Vargas-Ferreira, Dione Torriani, Flávio Fernando Demarco. "Tooth erosion and dental caries in schoolchildren: is there a relationship between them?", Brazilian Journal of Oral Sciences, 2014

Publication

---

1 %

17

Samaa Al Sayegh, Annie Borgwardt, Krister G. Svensson, Abhishek Kumar, Anastasios Grigoriadis, Nikolaos Christidis. "Effects of Chronic and Experimental Acute Masseter Pain on Precision Biting Behavior in Humans", Frontiers in Physiology, 2019

Publication

---

1 %

18

Ebtissam M. Al-Madi, Manar AlJamie, Shaikha Al-Dukhail, Zakariya Mohammed, Neamat Hassan Abubakr. "Dietary Habits and Oral Hygiene Practice amongst Dental Students at the College of Dentistry, Princess Nourah

1 %



19

Liliana Teixeira, Maria-Conceição Manso, Patrícia Manarte-Monteiro. "Erosive tooth wear status of institutionalized alcoholic patients under rehabilitation therapy in the north of Portugal", Clinical Oral Investigations, 2016

Publication

---

20

Hasna Amir Mohaus. "Dental Caries among Tasters and Non-Tasters of PTC Substance in Students of Qurna Population", Journal of Molecular Biology Research, 2019

Publication

---

21

Magdalini Mantonanaki, Haroula Koletsi-Kounari, Eleni Mamai-Homata, William Papaioannou. "Dental erosion prevalence and associated risk indicators among preschool children in Athens, Greece", Clinical Oral Investigations, 2012

Publication

---

22

Bagheri G Hossein, Alireza Sadr, Jorge Espigares, Ilnaz Hariri et al. "Study on the influence of leucine-rich amelogenin peptide (LRAP) on the remineralization of enamel defects via micro-focus x-ray computed

1 %

1 %

1 %

1 %

tomography and nanoindentation",  
Biomedical Materials, 2015

Publication

23

Muhammed Al-Huda Ballouk, Mayssoon Dashash. "The gingival health status of 8–12 year-old children in Damascus city in Syria during the Syrian Crisis: a cross-sectional epidemiological oral health survey", BMC Research Notes, 2018

Publication

1 %

24

A. Lussi. "Dental erosion", Food constituents and oral health, 2009

Publication

1 %

25

Thi Thanh Hanh Nguyen, Ye-Seul Seo, Jae-Young Cho, Sun Lee et al. "Synthesis of oligosaccharide-containing orange juice using glucansucrase", Biotechnology and Bioprocess Engineering, 2015

Publication

1 %

26

Fláviaviegas Naylor. "Micromorphological Analysis of Dentinal Structure after Irradiation with Nd:YAG Laser and Immersion in Acidic Beverages", Photomedicine and Laser Surgery, 12/2006

Publication

1 %

27

Stefania Martignon, David Bartlett, David J. Manton, E. Angeles Martinez-Mier, Christian Splieth, Viviana Avila. "Epidemiology of

1 %

# Erosive Tooth Wear, Dental Fluorosis and Molar Incisor Hypomineralization in the American Continent", Caries Research, 2021

Publication

28

Netty Suryanti, Armasastra Bahar, Ali Liche Seniati, Anton Rahardjo. "Development of an oral hygiene behavior questionnaire for adolescents based on the theory of planned behavior", Journal of Stomatology, 2020

Publication

1 %

29

U Surahman, T Kubota, A Wijaya. " Life cycle assessment of energy and CO emissions for residential buildings in Jakarta, Indonesia ", IOP Conference Series: Materials Science and Engineering, 2016

Publication

<1 %

30

NTM Pratiwi, IP Ayu, S Hariyadi, D Mulyawati, A Iswantari. "Phytoplankton community in lake Ebony, Pantai Indah Kapuk, North Jakarta", IOP Conference Series: Earth and Environmental Science, 2018

Publication

<1 %

31

Stefanie Witt, Michaela Dellenmark-Blom, Susanne Kuckuck, Jens Dingemann et al. "Parent-Child-Agreement on Health-Related Quality of Life and its Determinants in Patients Born with Esophageal Atresia – A

<1 %

## Swedish-German Cross-Sectional Study", Research Square, 2020

Publication

32

H Rasmia, F Ali, K Herwis, F Mohamed, AA Musrati. "Prevalence of Dental Erosion in a Group of Schoolchildren from Benghazi, Libya", International Journal of Oral and Craniofacial Science, 2016

Publication

<1 %

33

Diah Ayu Maharani, Alisa Novianty Pratiwi, Febriana Setiawati, Shinan Zhang, Sherry Shiqian Gao, Chun Hung Chu, Anton Rahardjo. "Tooth wear among five-year-old children in Jakarta, Indonesia", BMC Oral Health, 2019

Publication

<1 %

34

Rodrigo E. Oliveira, Ana Solari, Sergio Francisco S. M. Silva, Gabriela Martin. "Dental erosion caused by a gastrointestinal disorder in a child from the Late Holocene of Northeastern Brazil", Cold Spring Harbor Laboratory, 2018

Publication

<1 %

35

Stefan Zimmer, Georg Kirchner, Mozhgan Bizhang, Mathias Benedix. "Influence of Various Acidic Beverages on Tooth Erosion. Evaluation by a New Method", PLOS ONE, 2015

Publication

<1 %



36

Alex Simon Chan, Theresa Thien Kim Tran, Yi Hsuan Hsu, Stephanie Yue Sum Liu, Jeroen Kroon. "A systematic review of dietary acids and habits on dental erosion in adolescents", International Journal of Paediatric Dentistry, 2020

Publication

<1 %

37

J. Buczkowska-Radlińska, R. Łagocka, W. Kaczmarek, M. Górski, A. Nowicka. "Prevalence of dental erosion in adolescent competitive swimmers exposed to gas-chlorinated swimming pool water", Clinical Oral Investigations, 2012

Publication

<1 %

38

S Taji. "A literature review of dental erosion in children : Dental erosion in children", Australian Dental Journal, 12/2010

Publication

<1 %

39

"Oral Epidemiology", Springer Science and Business Media LLC, 2021

Publication

<1 %

40

Goh, Victor, Esmonde F. Corbet, and W. Keung Leung. "Impact of dentine hypersensitivity on oral health-related quality of life in individuals receiving supportive periodontal care", Journal Of Clinical Periodontology, 2016.

Publication

<1 %

- |    |  |      |
|----|--|------|
| 41 | Shinan Zhang, Biao Xu, Juan Liu, Edward CM Lo, Chun-Hung Chu. "Dental and periodontal status of 12-year-old Dai school children in Yunnan Province, China: a cross-sectional study", BMC Oral Health, 2015<br>Publication  | <1 % |
| 42 | C h Chu. "Dietary behavior and knowledge of dental erosion among Chinese adults", BMC Oral Health, 2010<br>Publication   | <1 % |
| 43 | Fernanda Clotilde Mariz da COSTA, Liege Helena Freitas FERNANDES, Eline Freitas de Farias MOURA, Yêska Paola Costa AGUIAR et al. "Oral health habits, prevalence of dental caries and dental erosion in adolescents", RGO - Revista Gaúcha de Odontologia, 2017<br>Publication | <1 % |
| 44 | Sandeep Kumar, Shashidhar Acharya, Prashant Mishra, Nitai Debnath, Ramprasad Vasthare. "Prevalence and risk factors for dental erosion among 11- to 14-year-old school children in South India", Journal of Oral Science, 2013<br>Publication                                  | <1 % |
| 45 | A Agustanti, S A Ramadhani, M Adiatman, A Rahardjo, M Callea, I Yavuz, D A Maharani. "Efficacy test of a toothpaste in reducing  | <1 % |

46

Lulëjeta Ferizi, Venera Bimbashi, Jeta Kelmendi, Tetore Olloni. "Oral Health Status Among 12-Year-Old Schoolchildren in Kosovo", Pesquisa Brasileira em Odontopediatria e Clínica Integrada, 2020

Publication

<1 %

47

S. B. Abu-Ghazaleh, G. Burnside, A. Milosevic. "The prevalence and associated risk factors for tooth wear and dental erosion in 15- to 16-year-old schoolchildren in Amman, Jordan", European Archives of Paediatric Dentistry, 2013

Publication

<1 %

48

A. LEE. "Tooth wear and wear investigations in dentistry : TOOTH WEAR", Journal of Oral Rehabilitation, 03/2012

Publication

<1 %

49

Chun-Shun Yang, Pauline Ford, Xiaoman Liu, Shaneen Leishman, Lisa Schubert. "Ready-to-drink non-alcoholic beverages", Nutrition & Food Science, 2016

Publication

<1 %

50

D L Sari, A Bahar, H A Gunawan, M Adiatman, A Rahardjo, D A Maharani, I R Toptanci, I Yavuz. "Fluoride concentration in urine after

<1 %

silver diamine fluoride application on tooth enamel", Journal of Physics: Conference Series, 2017

Publication

51

D Rukmana. "Rapid urbanization and the need for sustainable transportation policies in Jakarta", IOP Conference Series: Earth and Environmental Science, 2018

Publication

<1 %

52

Dental Erosion and Its Clinical Management, 2015.

Publication

<1 %

53

JESSE MCGUIRE. "Erosive tooth wear among children in the United States: relationship to race/ethnicity and obesity", International Journal of Paediatric Dentistry, 03/2009

Publication

<1 %

54

RASMIA HUEW. "Dental caries and its association with diet and dental erosion in Libyan schoolchildren : Caries, diet and erosion in Libyan schoolchildren", International Journal of Paediatric Dentistry, 01/2012

Publication

<1 %

55

Shamir.B. Mehta, Bas A.C. Loomans, Ewald M. Bronkhorst, Subir Banerji, David W. Bartlett. "The impact of e-training on tooth wear

<1 %



assessments using the BEWE", Journal of  
Dentistry, 2020

Publication

56

Vasileios Margaritis, Eleni Mamai-Homata, Haroula Koletsi-Kounari. "Novel methods of balancing covariates for the assessment of dental erosion: A contribution to validation of a synthetic scoring system for erosive wear", Journal of Dentistry, 2011

Publication

<1 %

57

Yousef H. Al-Dlaigan, Laila A. Al-Meedania, Sukumaran Anil. "The influence of frequently consumed beverages and snacks on dental erosion among preschool children in Saudi Arabia", Nutrition Journal, 2017

Publication

<1 %

58

Yuval Vered, A. Lussi, A. Zini, J. Gleitman, H. D. Sgan-Cohen. "Dental erosive wear assessment among adolescents and adults utilizing the basic erosive wear examination (BEWE) scoring system", Clinical Oral Investigations, 2014

Publication

<1 %

59

A. Lussi. "Erosion—diagnosis and risk factors", Clinical Oral Investigations, 03/2008

Publication

<1 %

60

Fabiana Vargas-Ferreira. "Prevalence of tooth erosion and associated factors in 11-14-year-

<1 %

old Brazilian schoolchildren : Tooth erosion and risk factors", Journal of Public Health Dentistry, 01/2011

Publication

61

Inga B. Arnadottir. "Prevalence of dental erosion in children: a national survey : Dental erosion in Iceland", Community Dentistry And Oral Epidemiology, 12/2010

<1 %

Publication

62

Duangporn Duangthip, Kitty Jieyi Chen, Sherry Shiqian Gao, Adrian Lussi, Edward Chin Man Lo, Chun Hung Chu. "Erosive tooth wear among preschool children in Hong Kong", International Journal of Paediatric Dentistry, 2019

<1 %

Publication

63

M.M.S. Salas, G.G. Nascimento, M.C. Huysmans, F.F. Demarco. "Estimated prevalence of erosive tooth wear in permanent teeth of children and adolescents: An epidemiological systematic review and meta-regression analysis", Journal of Dentistry, 2015

<1 %

Publication

Exclude quotes Off

Exclude matches Off

Exclude bibliography Off

